

State of Wyoming Corner Record

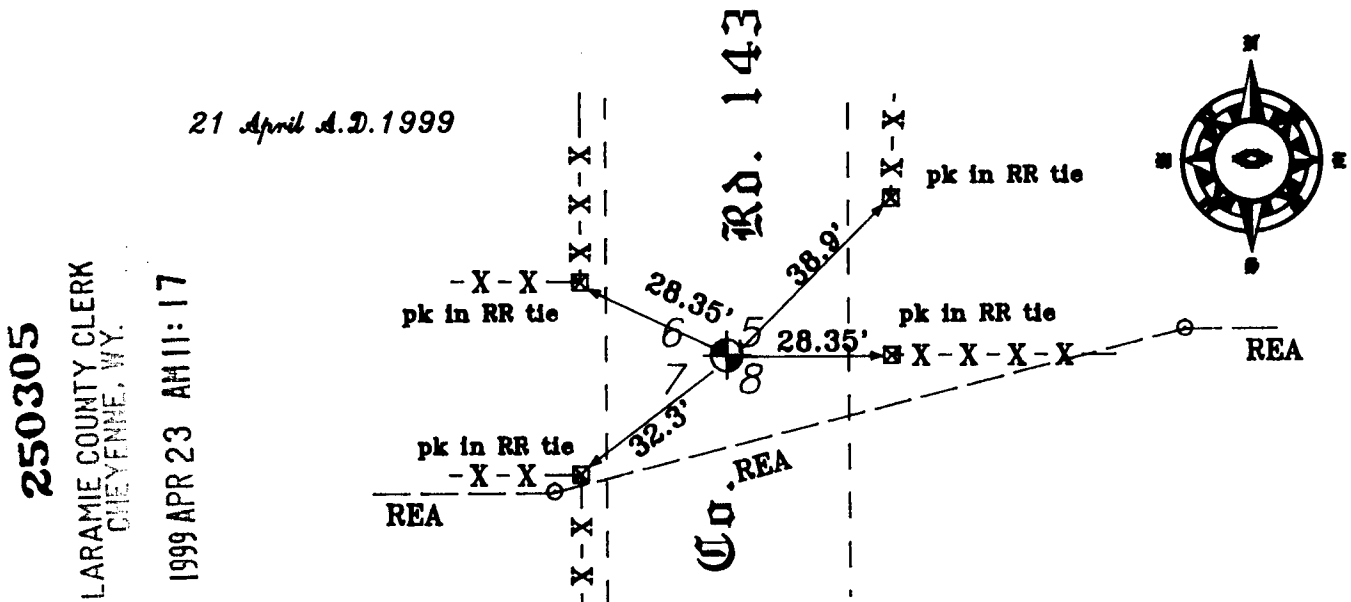
(In compliance with the CORNER PERPETUATION AND FILING ACT: Wyoming Statutes, 1977,
Section 36~11~101, et seq., and the Rules and Regulations of the Board of Registration for Professional
Engineers and Professional Land Surveyors)

The reverse side of this form may be used if more space is needed.

The Record of the original survey and the citation of the source of the historical information (if the corner is lost or obliterated). The description of the corner monumentation evidence as found and/or the monument and it's accessories as established to perpetuate the location of this corner. A sketch of the relative location of this Monument, accessories, and reference points with the course and distance to adjacent corner (s) (if determined during this Survey). The Method and Rationale used for the reestablishment of lost and obliterated corner.

General Land Office Survey performed June 1871 by Edwin James Deputy Surveyor under joint contract of Edwin James & Alfred M. Rogers with Silas Reed Surveyor General, No.15 bearing date 20 th May 1871.

Found a 3" Diameter Aluminum Cap buried approximately 5 inches beneath the road surface, marked appropriately and stamped [PE&LS 707].
Located approximately One Mile North of the Intersection of County Road 213 and County Road 143, and being Approximately 3/4 Mile South of the U.P.RR crossing of County Road 143.



Date of Field Work: 21 April A.D. 1999 Office Reference: Burbett

Cross Index Diagram

	1	2	3	4	5	6	7	8	9	10	11	12	13	14	15	16	17	18	19	20	21	22	23	24	25
A																									
B																									
C																									
D																									
E																									
F																									
G																									
H																									
I																									
J																									
K																									
L																									
M																									
N																									
O																									
P																									
Q																									
R																									
S																									
T																									
U																									
V																									
W																									
X																									
Y																									
Z																									

Firm/Agency, Address
Terrestrial Surveying & Mapping Co.
 1127 Terry Ranch Road
 Cheyenne, Wyoming 82007
 Telephone Number: (307) 634-9360
"Your Friendly Neighborhood Surveyor"

This Corner Record was prepared by me or under my direction and supervision.

SEAL & SIGNATURE



Corner Name: 6/5 Section: 7/8 T. 14 N. R. 63 W. 6th P.M. Cross Index No. E ~ 5